



# Welcome

SETEX Area Reliability Project



# Purpose and need

## SETEX Area Reliability Project

### What is the SETEX Area Reliability Project?

Entergy Texas, Inc. (Entergy Texas or ETI) is planning to construct a new single-circuit 500 kilovolt (kV) transmission line approximately 130 miles in length (depending on the route ultimately approved by the Public Utility Commission of Texas (PUCT)) in Jasper, Montgomery, Newton, Polk, San Jacinto, Trinity, Tyler, and Walker Counties (Project). The new transmission line will connect the proposed Babel 500 kV Switching Station to the proposed Running Bear Substation.

The proposed Babel Switching Station will be constructed at one of three potential locations currently under consideration that will connect into the existing Layfield to Hartburg 500 kV transmission line south of Toledo Bend Reservoir in Newton County.

The proposed Running Bear Substation will be constructed at one of multiple locations currently under consideration that will connect into either ETI's existing Lewis Creek facilities along Longstreet Road between Lake Conroe and Interstate Highway 45 or ETI's existing transmission facilities east of Willis between Farm-to-Market Road 1097 and County Line Road in Montgomery County.

### What is the purpose and need of the SETEX Area Reliability Project?

During the 2023 Midcontinent Independent System Operator, Inc. (MISO) Transmission Expansion Plan (MTEP23) process, MISO identified this project as a Baseline Reliability Project (BRP) which is required to comply with Electric Reliability Organization (i.e., the North American Electric Reliability Corporation or NERC) reliability standards. The Project also meets the requirements detailed in Entergy's Local Planning Criteria. The Entergy Local Planning Criteria details the load serving capability criteria for constrained regions of the system, including existing load pockets such as ETI's Western Region. Finally, the Project will increase operational flexibility, help meet the growing power demands of Southeast Texas throughout ETI's Western Region and broader service territory, and increase reliability and resiliency during extreme events.

ETI's historically constrained Western Region load pocket has grown by approximately 5 percent per year over the last 5 years, and the Houston Metro area has swiftly expanded into ETI's service territory. While transmission upgrades have improved load serving capability over the years, the area remains constrained as growth in the region continues to increase. This Project will provide ETI with much needed operational flexibility and help address historical and ongoing load growth.

By adding a new source of transmission to the constrained Western Region, the project will also improve load serving capability and resilience during extreme events, such as Winter Storm Uri.

### The Proposed Project will require the following scopes of work:

**1) Design and build the new Babel 500 kV Switching Station:** Construct a new 500 kV Six Breaker Ring Substation that will tap the existing Layfield to Hartburg 500 kV transmission line.

**2) Design and build the new Running Bear 500 kV Substation:** Construct a new 500/230/138 kV Substation near ETI's existing Lewis Creek generation and transmission facilities or ETI's existing transmission facilities east of Willis, TX.

**3) Design and build the new Babel to Running Bear 500 kV Transmission Line:** The new transmission line will be a new single-circuit 500 kV transmission line that would connect the proposed Babel and Running Bear stations.

At Entergy Texas, Inc., we have a simple set of values: Focus on our customers, treat people with respect and act with integrity. Our project construction plan will be developed with you, our valued customer, in mind. Once work begins, we will work safely during reasonable hours with as little inconvenience to you as possible.



# Certification process

## SETEX Area Reliability Project

### Project development

- Identify project study area.
- Gather environmental and cultural data.
- Contact federal, state and local agencies.
- Identify routing constraints.
- Develop preliminary alternative route segments.
- Identify current landowners within 500 ft of alternative routes.
- Solicit public input via open house meetings. **(We Are Here)**
- Evaluate preliminary alternative routes and identify primary alternative routes.

### Certificate of convenience and necessity (CCN) application process

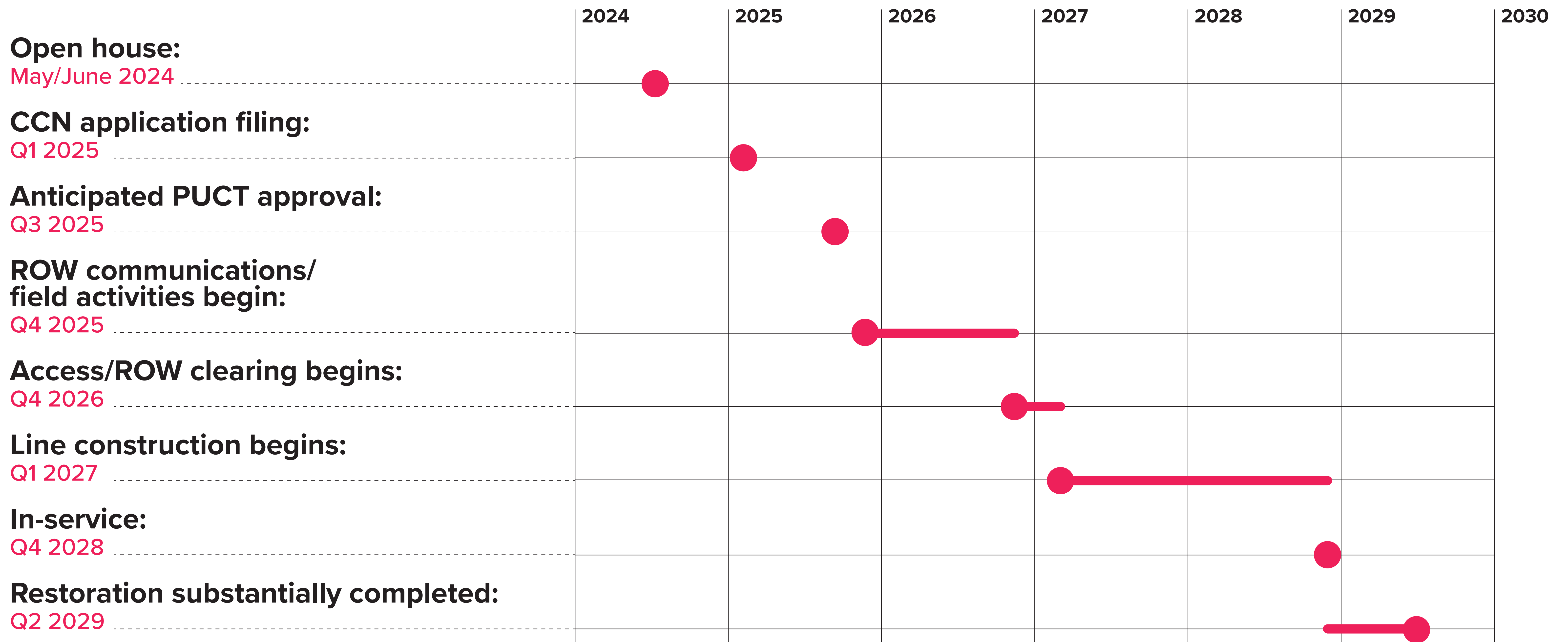
- Submit CCN Application to the Public Utility Commission of Texas (PUCT), including an adequate number of alternative routes.
- Send notices to landowners within 500 ft. of an alternative route, municipalities, counties, electric utilities, Department of Defense, and pipeline owners in the area.
- All routes and route segments included in this notice are available for selection and approval by the PUCT. If approved, only one route (consisting of multiple route segments) from a “Cut-In” option to the Babel Substation site will be selected by the PUCT.
- Interested parties may file comments or a motion to intervene and participate in the PUCT proceeding (Intervention Period – 30 days)
  - If application is uncontested: application approved administratively in 80 days.
  - If application is contested: application processed within 180 days and could include a hearing.

### PUCT decision and next steps

- Approves or denies application.
- If approved, selects location of final approved route.
- Approval provides Entergy Texas, Inc. with the authorization to build the new transmission line along the route approved by the PUCT.
- Notices will be sent to landowners who received notice of Entergy Texas, Inc.’s application advising them of the decision and next steps.

# Project schedule

## SETEX Area Reliability Project



Schedule is subject to change pending engineering and regulatory review.

At Entergy Texas, Inc., we have a simple set of values: Focus on our customers, treat people with respect and act with integrity. Our project construction plan will be developed with you, our valued customer, in mind. Once work begins, we will work safely during reasonable hours with as little inconvenience to you as possible.



# Right-of-way (ROW) acquisition process

## SETEX Area Reliability Project



At Entergy Texas, Inc., we have a simple set of values: Focus on our customers, treat people with respect and act with integrity. Our project construction plan will be developed with you, our valued customer, in mind. Once work begins, we will work safely during reasonable hours with as little inconvenience to you as possible.



# Right-of-way (ROW) clearing

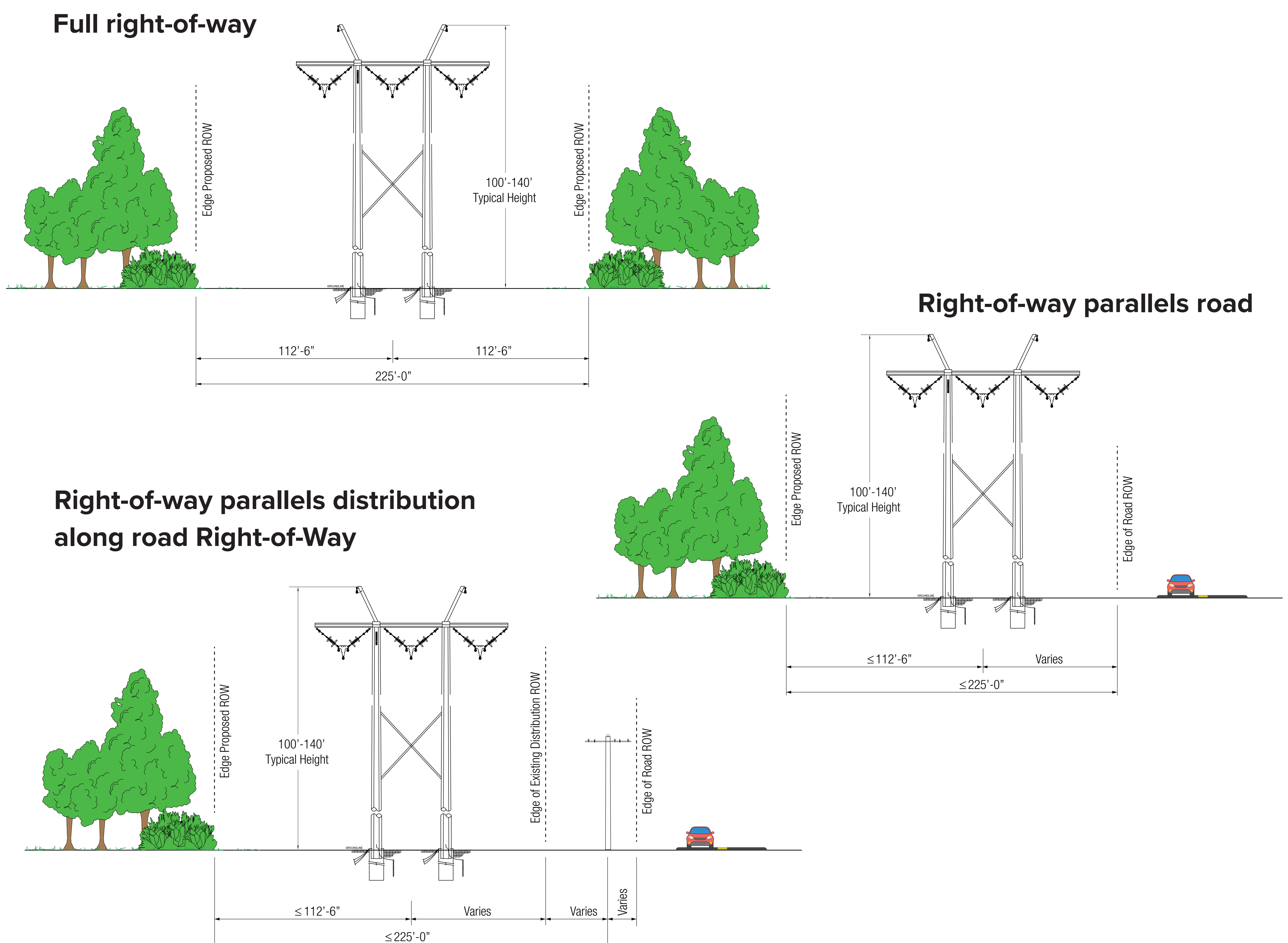
## SETEX Area Reliability Project

### About right-of-way clearing

- Trees and branches near or touching power lines can cause service interruptions.
- Electricity can arc or “flashover” from wires to nearby trees before actual contact is made, causing electric current to flow through the trees into the ground.
- To ensure everyone’s safety, Texas, like most states, has adopted the National Electrical Safety Code.
- The code establishes mandatory clearances to be maintained around power lines.

### Typical cross sections

Dimensions may vary depending on location and spatial constraints.

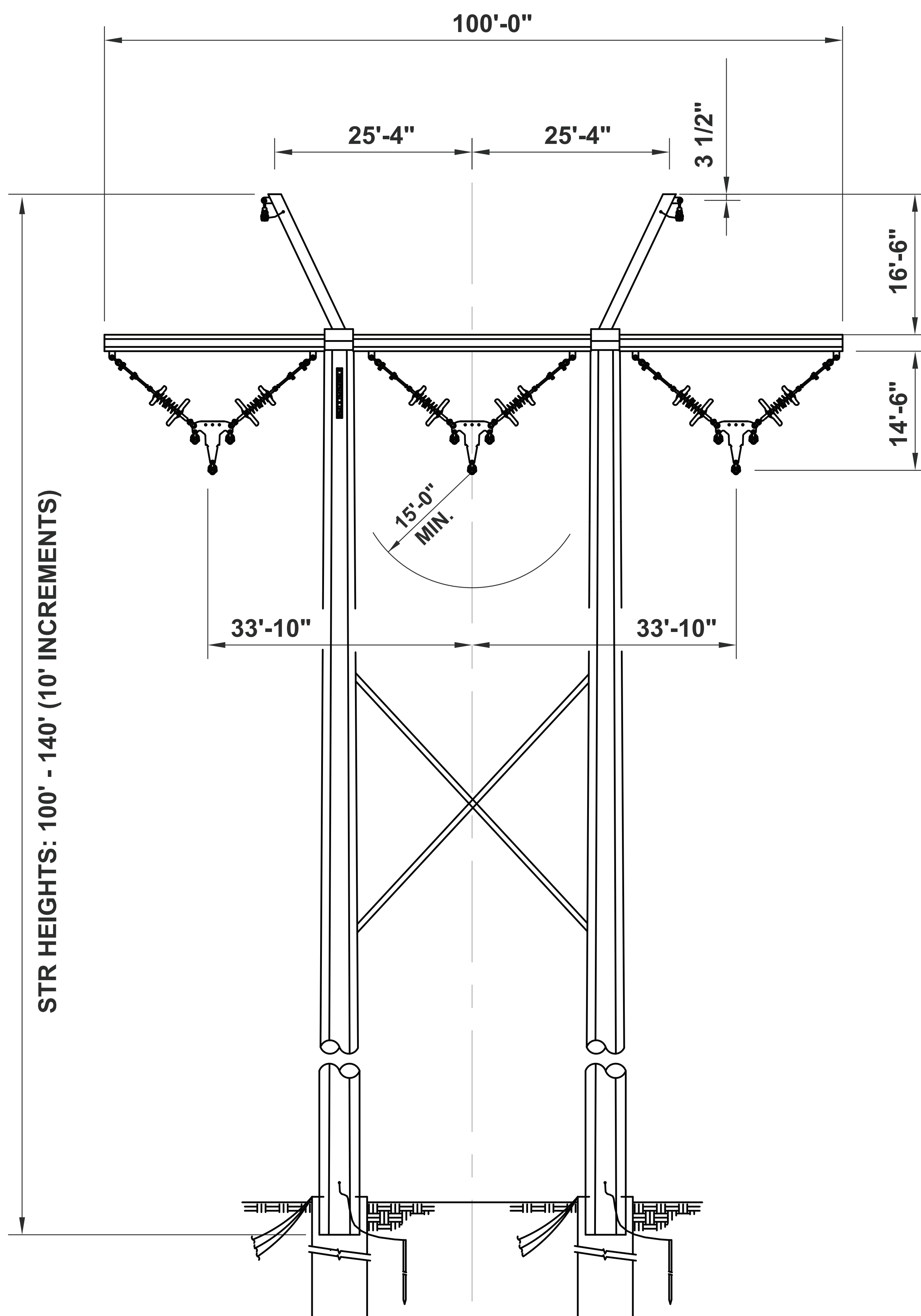


At Entergy Texas, Inc., we have a simple set of values: Focus on our customers, treat people with respect and act with integrity. Our project construction plan will be developed with you, our valued customer, in mind. Once work begins, we will work safely during reasonable hours with as little inconvenience to you as possible.

# Typical structure

SETEX Area Reliability Project

## Typical 500kV H-Frame V-String Structure



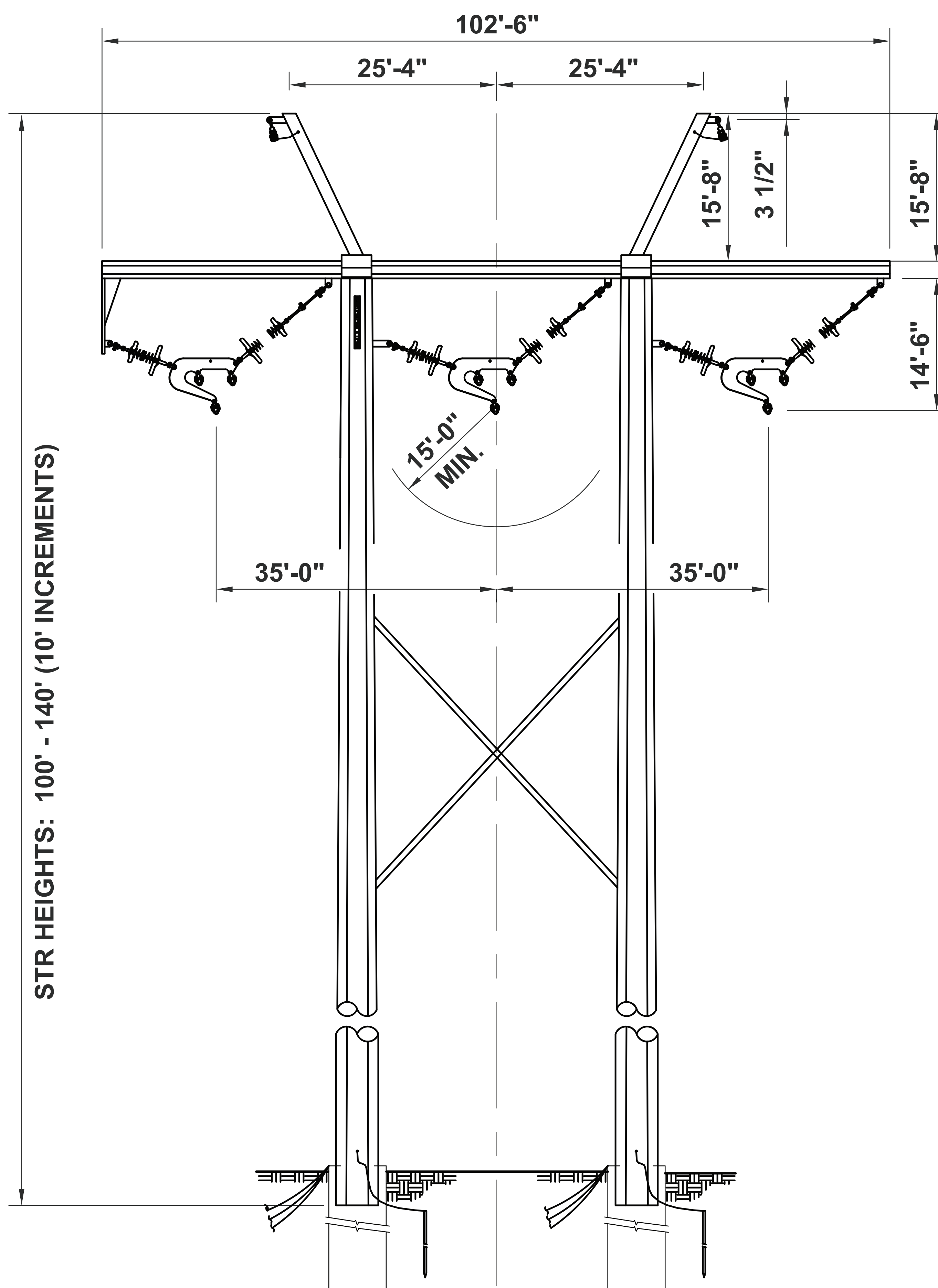
At Entergy Texas, Inc., we have a simple set of values: Focus on our customers, treat people with respect and act with integrity. Our project construction plan will be developed with you, our valued customer, in mind. Once work begins, we will work safely during reasonable hours with as little inconvenience to you as possible.



# Typical structure

## SETEX Area Reliability Project

### Typical 500kV H-Frame Running Angle Structure



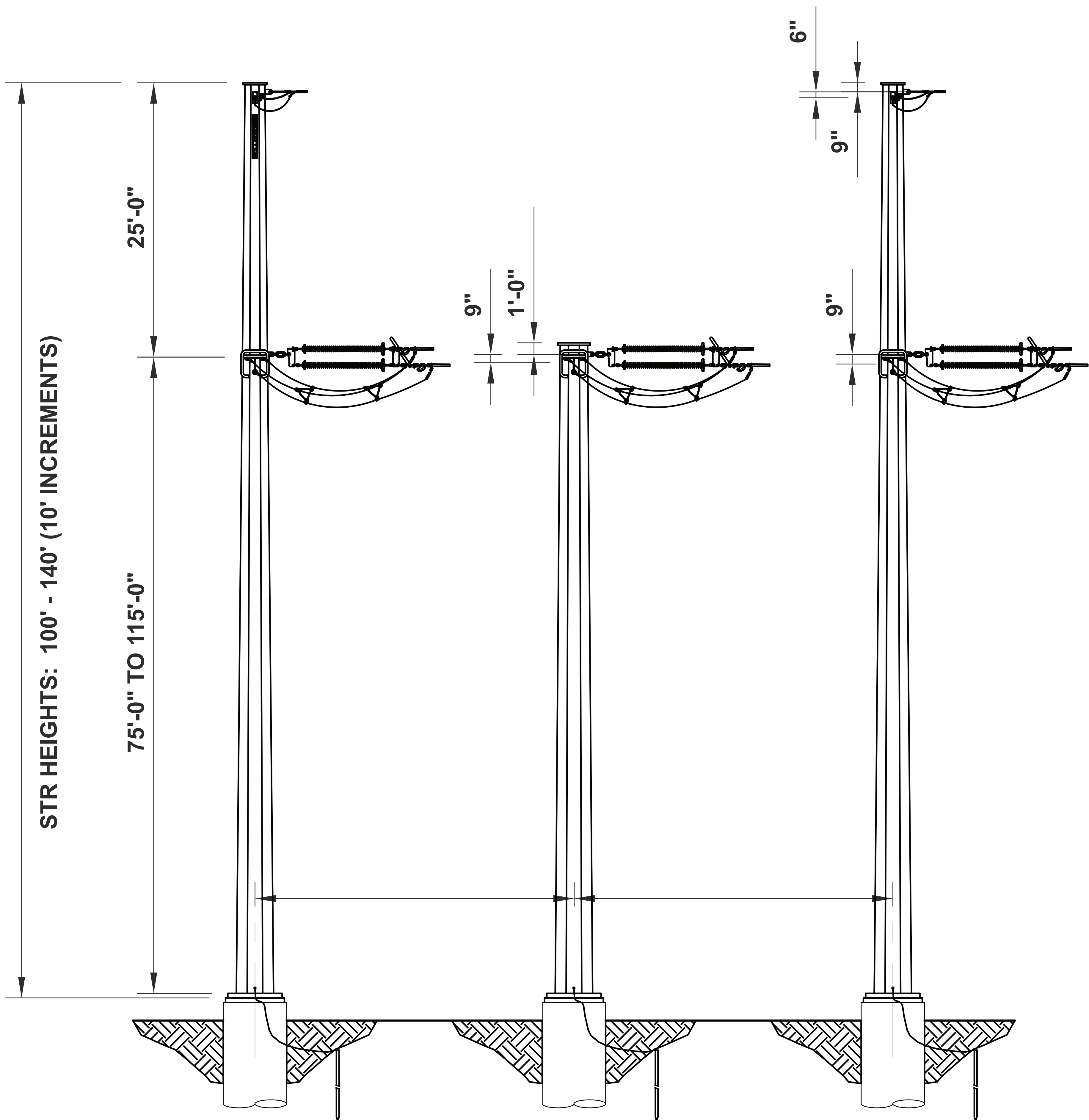
At Entergy Texas, Inc., we have a simple set of values: Focus on our customers, treat people with respect and act with integrity. Our project construction plan will be developed with you, our valued customer, in mind. Once work begins, we will work safely during reasonable hours with as little inconvenience to you as possible.



# Typical structure

SETEX Area Reliability Project

Typical 500kV  
3-Pole Structure



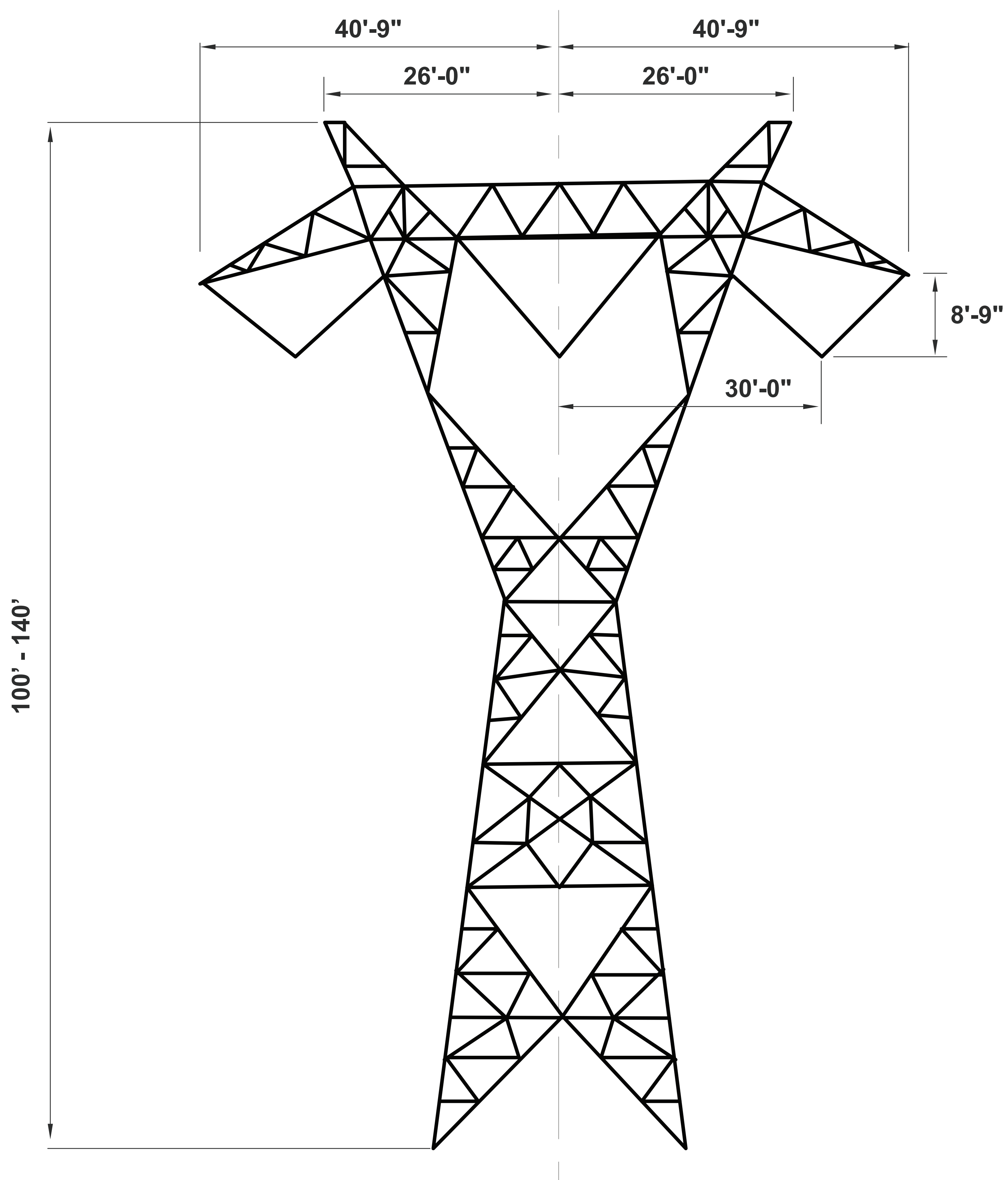
At Entergy Texas, Inc., we have a simple set of values: Focus on our customers, treat people with respect and act with integrity. Our project construction plan will be developed with you, our valued customer, in mind. Once work begins, we will work safely during reasonable hours with as little inconvenience to you as possible.



# Typical structure

SETEX Area Reliability Project

## Typical 500kV Lattice Tangent Structure



At Entergy Texas, Inc., we have a simple set of values: Focus on our customers, treat people with respect and act with integrity. Our project construction plan will be developed with you, our valued customer, in mind. Once work begins, we will work safely during reasonable hours with as little inconvenience to you as possible.



# Typical substation

**SETEX Area Reliability Project**



At Entergy Texas, Inc., we have a simple set of values: Focus on our customers, treat people with respect and act with integrity. Our project construction plan will be developed with you, our valued customer, in mind. Once work begins, we will work safely during reasonable hours with as little inconvenience to you as possible.



# Agencies contacted

## SETEX Area Reliability Project

### Federal

---

Big Thicket National Preserve  
Federal Aviation Administration  
Federal Emergency Management Agency  
National Parks Service  
Natural Resource Conservation Service  
U.S. Army Corps of Engineers  
Military Aviation and Installation Assurance Siting Clearinghouse  
U.S. Environmental Protection Agency  
National Forests & Grasslands in Texas  
Angelina National Forest  
Sabine National Forest  
Sam Houston National Forest  
U.S. Forest Service

### State

---

Railroad Commission of Texas  
Texas Commission on Environmental Quality  
Texas Department of Transportation

- Executive Director
- Aviation Division
- Environmental Affairs Division
- Transportation Planning & Programming
- Beaumont District Engineer

Texas General Land Office  
Texas Historical Commission  
Texas Parks and Wildlife Department  
Texas Water Development Board  
Texas Historical Commission  
Trinity River Authority  
San Jacinto River Authority

### Local

---

Jasper, Montgomery, Newton, Polk, San Jacinto, Tyler, and Walker County Judges  
Jasper, Montgomery, Newton, Polk, San Jacinto, Tyler, and Walker County Commissioners  
Jasper, Montgomery, Newton, Polk, San Jacinto, Tyler, and Walker County Historical Commissions  
Montgomery County Engineering Department  
Montgomery County Floodplain Administrator  
Montgomery County Permit Department  
San Jacinto County Permits Officer  
City of Coldsprings, Colmesneil, Conroe, Goodrich, Jasper, Livingston, Onalaska, Willis, and Woodville Officials  
Big Sandy, Brookeland, Burkeville, Chester, Cleveland, Coldsprings-Oakhurst, Colmesneil, Conroe, Corrigan-Camden, Goodrich, Groveton, Huntsville, Jasper, Kirbyville, Leggett, Livingston, New Waverly, Newton, Onalaska, Shepherd, Spurger, Trinity, Warren, Willis, and Woodville ISD  
Houston-Galveston Area Council  
Alabama-Coushatta Tribe of Texas

### Non-Governmental Organizations

---

Texas Agricultural Land Trust  
Texas Land Conservancy  
Texas Land Trust Council  
The Nature Conservancy, Texas  
Bayou Land Conservancy  
Houston Audubon Society  
Deep East Texas Council of Governments  
South East Texas Regional Planning Commission  
Southeast Texas Groundwater Conservation District

At Entergy Texas, Inc., we have a simple set of values: Focus on our customers, treat people with respect and act with integrity. Our project construction plan will be developed with you, our valued customer, in mind. Once work begins, we will work safely during reasonable hours with as little inconvenience to you as possible.



# Evaluation criteria

## SETEX Area Reliability Project

### Land Use

---

- 01 Length of alternative route
- 02 Number of habitable structures<sup>1</sup> within 500 feet of the route centerline
- 03 Length of route utilizing existing electric facility right-of-way (ROW)
- 04 Length of route parallel to existing electric facility ROW
- 05 Length of route parallel to other existing compatible ROW (roads, highways, railway, or telephone utility ROW, etc.)
- 06 Length of route parallel to apparent property lines<sup>2</sup> (or other natural or cultural features)
- 07 Sum of evaluation criteria 3, 4, 5, and 6
- 08 Percent of evaluation criteria 3, 4, 5, and 6
- 09 Length of route parallel to pipeline ROW
- 10 Length of route across parks/recreational areas<sup>3</sup>
- 11 Number of additional parks/recreational areas<sup>3</sup> within 1,000 feet of the route centerline
- 12 Length of route across cropland
- 13 Length of route across pasture/rangeland
- 14 Length of route across land irrigated by traveling systems (rolling or pivot type)
- 15 Length of route across gravel pits, mines, or quarries
- 16 Number of pipeline crossings
- 17 Number of electric transmission line crossings
- 18 Number of Interstate (IH), US Highway (US Hwy), and State Highway (SH) crossings
- 19 Number of Farm-to-Market (FM) or Ranch-to-Market (RM) road crossings
- 20 Number of private use airstrips within 10,000 feet of the route centerline
- 21 Number of heliports within 5,000 feet of the route centerline
- 22 Number of FAA registered airports<sup>4</sup> (runways >3,200 feet) within 20,000 feet of the route centerline
- 23 Number of FAA registered airports<sup>4</sup> (runways <3,200 feet) within 10,000 feet of the route centerline
- 24 Number of commercial Amplitude Modulation (AM) radio transmitters within 10,000 feet of the route centerline
- 25 Number of Frequency Modulation radio (FM radio), microwave towers, etc. within 2,000 feet of the route centerline
- 26 Number of existing water wells within 200 feet of the route centerline
- 27 Number of oil and gas wells within 200 feet of the route centerline

### Aesthetics

---

- 28 Estimated length of route within foreground visual zone<sup>5</sup> of US, Interstate, and State highways
- 29 Estimated length of route within foreground visual zone<sup>5</sup> of FM/RM roads
- 30 Estimated length of route within foreground visual zone<sup>5</sup> of parks/recreational areas<sup>3</sup>

### Ecology

---

- 31 Length of route across bottomland/riparian forest
- 32 Length of route across upland forest
- 33 Acreage of route across National Wetland Inventory (NWI) mapped forested or scrub/shrub wetlands
- 34 Acreage of route across NWI mapped emergent wetlands
- 35 Length of route across known critical habitat of federally-listed threatened or endangered species
- 36 Length of route across open water (lakes, ponds, etc.)
- 37 Number of stream/canal crossings
- 38 Number of navigable waterway crossings
- 39 Length of route parallel (within 100 feet) to natural streams or rivers
- 40 Length of route across FEMA mapped 100-year floodplains

### Cultural Resources

---

- 41 Number of cemeteries within 1,000 feet of the route centerline
- 42 Number of recorded historic or archaeological resources crossed by route
- 43 Number of additional recorded historic or archaeological resources within 1,000 feet of route centerline
- 44 Number of resources determined eligible for or listed on the National Register of Historic Places crossed by route
- 45 Number of additional resources determined eligible for or listed on the National Register of Historic Places within 1,000 feet of route centerline
- 46 Length of route across high archaeological/historical site potential

### Notes

- 1 Single-family and multi-family dwellings, and related structures, etc., mobile homes, apartment buildings, commercial structures, industrial structures, business structures, churches, hospitals, nursing homes, schools or other structures normally inhabited by humans or intended to be inhabited by humans on a daily or regular basis within 500 feet of the centerline of a transmission project of 230 kV or more.
- 2 Apparent Property lines created by existing roads, highway, or railroad ROW are not "double-counted" in the length of route parallel to apparent property lines criteria.
- 3 Defined as parks and recreational areas owned by a governmental body or an organized group, club, or church within 1,000 feet of the centerline of the project.
- 4 As listed in the Chart Supplement South Central U.S. (FAA 2023b formerly known as the Airport/Facility Directory South Central U.S.), FAA 2023a.
- 5 One-half mile, unobstructed. Lengths of ROW within the foreground visual zone of Interstates, US and state highway criteria are not "double-counted" in the length of ROW within the foreground visual zone of FM roads criteria.
- 6 One-half mile, unobstructed. Lengths of ROW within the foreground visual zone of parks/recreational areas may overlap with the total length of ROW within the foreground visual zone of interstates, US and state highway criteria and/or with the total length of ROW within the foreground visual zone of FM roads criteria.

At Entergy Texas, Inc., we have a simple set of values: Focus on our customers, treat people with respect and act with integrity. Our project construction plan will be developed with you, our valued customer, in mind. Once work begins, we will work safely during reasonable hours with as little inconvenience to you as possible.

